

ZOOMLION TELESCOPIC CRAWLER CRANE ZCT1500



ZOOMLION

4.0
PRODUCTS

Zoomlion Heavy Industry Science & Technology Co.,Ltd.

Add: No.677, Lugu Road, Zoomlion Industrial Park, Changsha, Hunan, China, 410205

Copyright©2021 Zoomlion. All rights reserved. Reproduction and copying of any part of contents is not allowed for any purposes without Zoomlion's approval.

website:en.zoomlion.com

Product specifications are subject to change without notice and obligation. The photographs and/or drawing in this document are for illustrative purposes only. Please consult your local ZOOMLION dealer for more information.



ZOOMLION Highlights

- Stronger lifting capacity:**

the max. lifting moment of the basic boom is 5220kN.m, leading the industry; The longest main boom is 65m and the max. lifting load is leading in the industry; The lifting performance of medium and long boom is outstanding, and the lifting capacity is more than 30% higher than that of our competitors.

- Easy and fast transportation:**

the width of the whole vehicle is 3.6m, and there is no need to disassemble the crawler frame to meet the width requirements of non road transportation; Convenient transportation, few assembly parts, self-disassembly of movable counterweight, and efficient operation on the construction site.

- Strong road adaptability:**

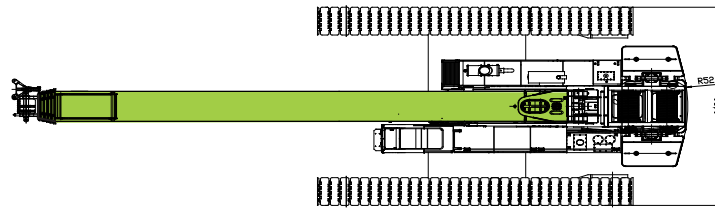
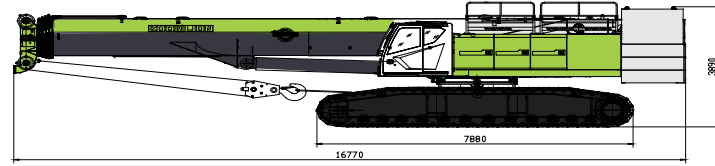
the special chassis for large gauge retractable crawler is adopted, which has good stability, large driving force and strong climbing ability.

- Small working radius:**

the tail turning radius is 5.2m, which meets the requirements of operation in narrow space.

- Equip with goose head:**

the lifting range of the main boom is increased to meet the needs of special customers.



ZOOMLION Lifting Capacity Table

Working radius (m)	Telescoping cylinder I fully extended, 28T CWT, 9T body CWT												
	13.8	18.5	23.2	27.9	32.6	37.3	42	46.7	51.4	56.1	60.8	65	
2.5	150												
3	135	115											
3.5	130	110	105										
4	120	107	100	85									
4.5	110	100	90	85	78								
5	100	96	88	82	78	70							
5.5	90	89	82	78	75	70							
6	85	81	78	75	70	68	50						
6.5	82	75	75	70	68	65	50						
7	74	70	70	62	65	62	50						
8	62	62	62	58	60	58	48	41					
9	53	54	55	55	53	55	44	39	31				
10	45	45	46	47	47	50	41	37	30.5	25			
11	38	39	39	40	40	41	38	34.5	28.5	25			
12		33	33	34	34	35	36	33	27.5	24	19		
13		30	29	30	30	31	32	31	26	23	18.8	15.5	
14		26	25.5	26	27	27	28	29.5	24.5	22	18.5	15.5	
15		23	23	23	24	24	25	23.8	23	21	17.9	15.2	
16			20	20	22	22	22	21	22	20	17.5	15	
18			16	17	18	19	18	17.8	18	19	16.2	14.5	
20			13	14	15	16	15	15	15	15.5	15.3	14	
22				12	12	13	13	12.8	12.8	13	13.5	13.5	
24				10	10	11	11	11	11	11	11.5	12	
26					9	10	9	9	10	10	10	10	
28					8	9	8.6	8	8.5	8.5	9	9	
30					7	8	7.5	7	7.5	7.5	8	8	
32						7	6.5	6.2	6.5	6.5	7	7.3	
34						6	5.7	5.3	5.5	6	6.3	6.5	
36							4.8	4.7	5	5.2	5.6	5.5	
38							4	4	4.3	4.5	5	5	
40								3.5	3.5	4	4.2	4.5	
42								3	3	3.5	3.8	4	
44								2.2	2.9	3	3.5	3.5	
46									2.4	2.5	3	3	
48									2	2.3	2.6	2.7	
50										2	2.3	2.4	
52											2	2	
54												1.7	
56												1.4	
Reeving	14	12	11	9	8	7	5	4	3	3	2	2	
Telescopic mode	11111	12111	22111	22211	22221	22222	32222	33222	33322	33332	33333	44444	

ZOOMLION Main Technical Parameters

Item		Value	Remarks
Max lifting capacity	t	150	
Max lifting moment of basic boom	KN.m	5220	
Max lifting moment of main boom(fully extended)	KN.m	2910	
Main boom length	m	13.8 ~ 65	
Jib length	m	10.2 ~ 18.6	
Boom angle	°	-1.5 ~ 82	
Jib offset	°	0, 15, 30	
Max. single rope speed of the main winch	m/min	142	Unload at 4 th layer
Max. single rope speed of the auxiliary winch	m/min	142	Unload at 4 th layer
Derricking up time	s	65	
Telescoping out time	s	560	
Slewing speed	rpm	0 ~ 1.5	
Traveling speed	km/h	0 ~ 1.7	
Gradeability	%	40	
Deadweight	t	125	
Dimension (L x W x H)	mm	16770×6420(3600)×3810	
Engine	Model	CUMMINS QBL9-C280	
	Rated power/rotational speed	kw/rpm	209/2100
	Max. output torque	N/rpm	1424 / 1500
	Emission standard		T3